

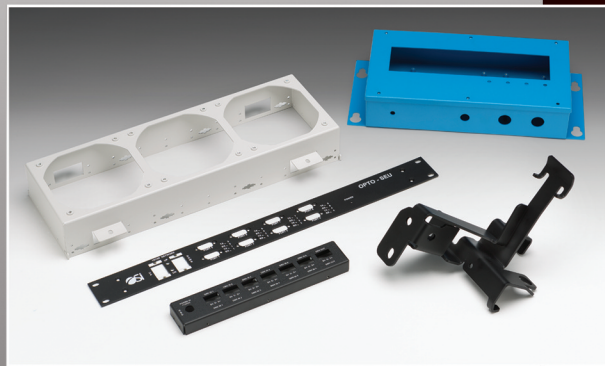


“We’ve increased productivity by more than 30%, while reducing lead times, setup, scrap and overall costs.”

— Feroz Abdulla
Production/Lean Manager
Metalcraft Technology Inc.



With 220 punches and 440 dies, the PDC ensures that the right tool is always available.



Amada’s networked machines and digital technology enable Metalcraft to provide fully integrated and highly-precise bending, punching and laser cutting.

Reh Abdulla, General Manager (left) and Feroz Abdulla, Production/Lean Manager of Metalcraft Technology Inc.



Unstoppable.

THE POWER OF INTEGRATED TECHNOLOGY AND AUTOMATED PROCESSING.

Since 1997, Metalcraft Technology Inc. in Coquitlam, BC has been a leading provider of custom sheet metal products for a wide range of industries. Founded by Azim Abdulla, the company operations are now managed by second generation family members Reh Abdulla, General Manager and Feroz Abdulla, Production/Lean Manager. Committed to uncompromising quality and lean manufacturing, Metalcraft partnered with Amada. After an in-depth analysis of Metalcraft’s specific manufacturing challenges, Amada provided the optimal solution.

Amada’s solution included the EML 3610 NT punch/laser combination machine equipped with an automated load/unload system and a single-part picking machine. To maximize machine utilization, the EML is also equipped with a PDC automated tool changer. Reflecting on the purchase, Feroz Abdulla states, “The EML is a model of efficiency and productivity allowing us to run 24/7 without operator intervention.” The EML provides fully automated production of complex parts (including nested sheets with a large variety of components) while eliminating manual tool changes.



Amada’s integrated, automated solution enabled Metalcraft to:

- **Reduce Operating Costs** (The EML’s energy-efficient, servo-electric design eliminates the need for hydraulics and delivers up to **50% cost reduction** over conventional turret punch presses. Time-consuming and costly manual tool changes have been eliminated by automated precision).
- **Expand Capabilities** (Capable of handling 5’ x 10’ fully-nested sheets without repositioning, the EML combines the punching, forming and tapping power of Amada’s innovative 33-ton Electric Motor (EM) turret punch press with the unlimited shape-cutting capabilities of a laser).
- **Maximize Efficiency** (Equipped with TK/ASR material handling options enables the EML to cost-effectively produce smaller lot sizes in a variety of material types and thicknesses or operate lights-out for extended production runs).

Amada Canada, Ltd.

885 Avenue Georges Cros, Granby • Quebec, Canada J2J 1E8 • 800-363-1220
2345 Argenta Road Unit #101 • Mississauga, ON L5N 8K4 • 800-561-4578
www.amada.ca

